

CORONAVIRUS (COVID-19)

de.gov/coronavirus



DELAWARE HEALTH
AND SOCIAL SERVICES
Division of Public Health

PROTECT YOURSELF & OTHERS

WASH YOUR HANDS FREQUENTLY

Be sure to wash your hands, including the backs and under your nails, for 20 seconds. Or use alcohol-based hand sanitizer.



DO NOT TOUCH YOUR FACE

Do not touch your eyes, nose, or mouth with unwashed hands.



CLEAN SURFACES REGULARLY

Clean commonly used surfaces such as phones, computers, desktops, countertops, cabinets and handles.



COUGH OR SNEEZE INTO YOUR ELBOW

Do not sneeze into your hand. If you use tissue, dispose of it right away.

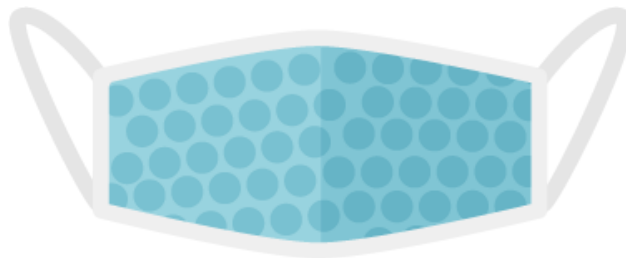
STAY HOME WHEN YOU ARE SICK

Be safe. If you feel sick, stay home.



YOU MUST WEAR CLOTH FACE COVERINGS IN PUBLIC

Delawareans are required to wear face coverings in public, including in grocery stores, convenience stores, pharmacies, doctor's offices, and on public transportation.



Questions? Contact us.

Call 2-1-1 or text your ZIP code to 898-211
for those who are deaf or hard of hearing.

Email DPHCall@delaware.gov