

The background of the slide features a large, faint, circular seal of the State of Delaware. The seal contains the text "SEAL OF THE STATE OF DELAWARE" around the top and "LIBERTY AND INDEPENDENCE" around the bottom. In the center of the seal is a figure holding a scale and a sword.

DELAWARE'S RESPONSE TO COVID-19

Press Briefing
September 28, 2021

de.gov/covidvaccine

STATE OF DELAWARE

DATA UPDATE

456.1

New Cases

7-day Average

7.3%

Positive Tests

7-day Average

215

Hospitalizations

1,950

Lives Lost

View more COVID-19 data: de.gov/healthycommunity

STATE OF DELAWARE

VACCINE UPDATE

**Total Vaccines
Administered**

1,192,563

**Fully
Vaccinated**

557,955

76.5%

Delawareans 12+
at least one dose

78.2%

Delawareans 18+
at least one dose

97.2%

Delawareans 65+
at least one dose

Data as of: September 27, 2021 - 6:00am

CDC Data: covid.cdc.gov/covid-data-tracker/#vaccinations

ChristianaCare loses 150 employees over COVID-19 vaccine mandate

Amy Cherry Published Sep 27, 2021 at 1:42 pm



Employer Vaccination Requirements

From the Delaware Department of Labor:

Failing to comply with a COVID-19 vaccination requirement in most instances would **disqualify a claimant from receiving benefits.**

Medical and religious exemptions are on a case-by-case basis.

Vaccination Requirements

Required to show **proof of vaccination** or undergo regular COVID-19 testing by **September 30**

- ▶ **State Employees**
- ▶ **Staff in long-term care and other health care facilities**

**Our goal is to keep
students in classrooms**

NEW: Vaccination Requirements for Educators

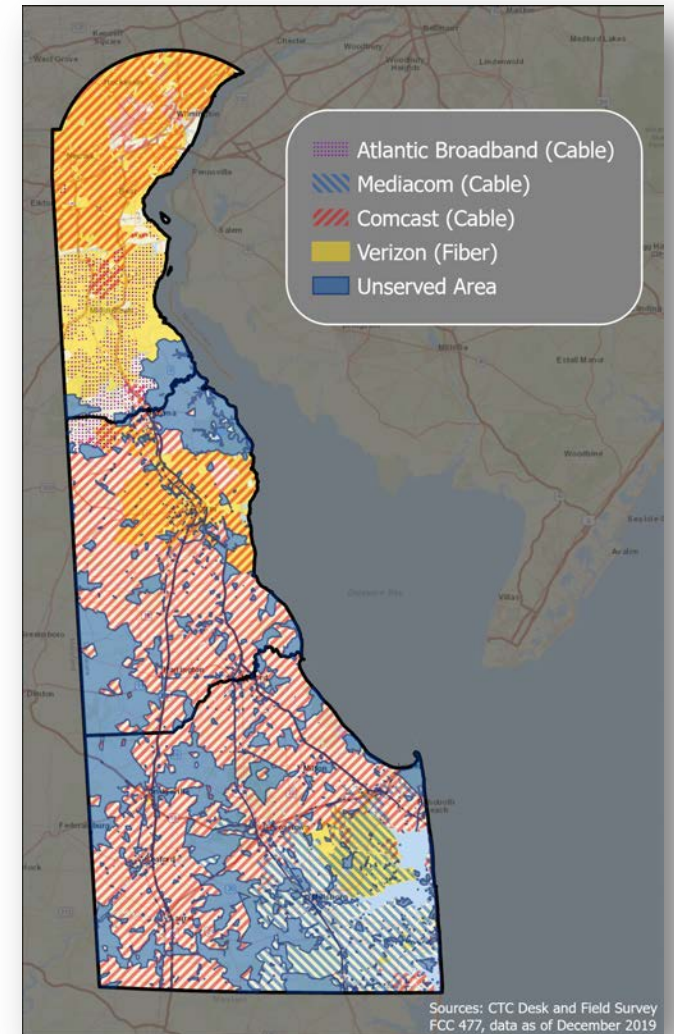
Educators and all school staff are required to **show proof of vaccination** or **undergo regular testing** to prevent the transmission of COVID-19 by **November 1**.

Medical and religious exemptions are on a case-by-case basis.

de.gov/getmyvaccine

In case you missed it:
\$110 Million Investment in DE's
Broadband Infrastructure

- **Improve speeds** in areas currently underserved or lacking a wired connection
- **Close “last mile” connections** in underserved areas
- **Extend Connect Delaware Program** and support broadband service for **26,000 low-income students** across the state



**Map of broadband provider
service areas as of Dec. 2019**

October Thank a Nurse Campaign

Thank You for Being
My Hero



Share & Tag a Nurse
You Want to Thank
#ThankaNurseDE



Get your
COVID-19 VACCINE

de.gov/getmyvaccine

**Dr. Karyl
Rattay**

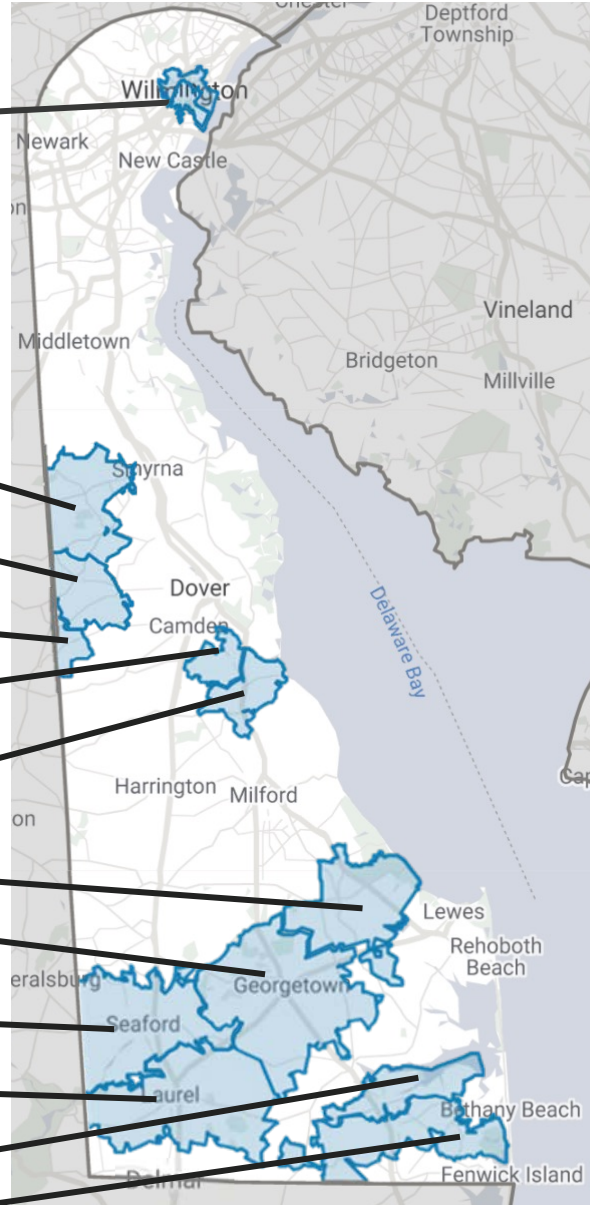
Director

Division of Public
Health

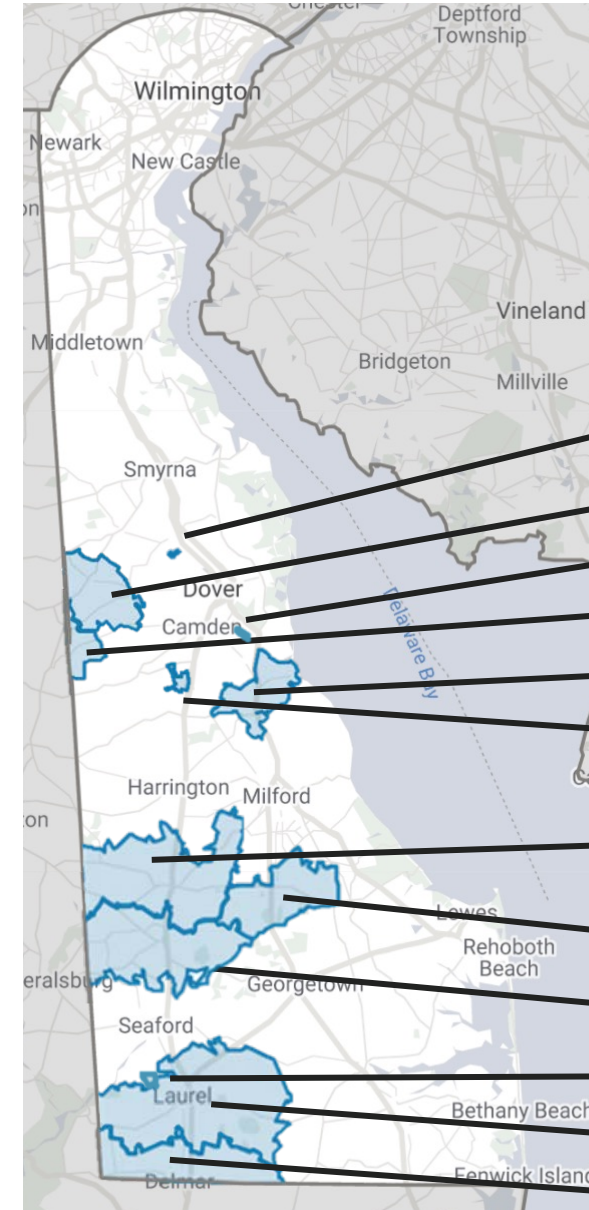
Areas of Most Concern

Wilmington
(19801)

Clayton
Hartly
Marydel
Magnolia
Frederica
Milton
Georgetown
Seaford
Laurel
Dagsboro
Frankford



Areas with Low Vaccination Rate



Cheswold
Hartly
Dover (19902)
Marydel
Frederica
Viola
Greenwood
Ellendale
Bridgeville
Bethel
Laurel
Delmar

Cases By Vaccination Status

Week of 8/8 – 9/19

- **17,081 Cases**
79% Unvaccinated/partially
- **812 COVID-related hospitalizations**
82% unvaccinated/partially
- **59 deaths**
64% unvaccinated/partially

Know the Difference: 3RD/ADDITIONAL DOSES VS. BOOSTERS



Third/Additional Doses

- **Moderately to severely compromised immune systems:**
 - *Organ or stem cell transplant recipients, HIV or cancer treatment, taking immunosuppressive drugs*
 - Providers should use **clinical judgement** and consider age 65+ and LTC residence to determine if patients are eligible
- **Authorized for Moderna & Pfizer** for administration 28 days following a 2nd dose



Booster Doses

- **For people who initially received Pfizer-BioNtech**
- **Extends protection** offered by the vaccine
- **Authorized 6 months or longer** following a 2nd dose
- Two sets of recommendations from CDC **based on risk; “should” vs “may”**
- **Not authorized for Moderna and J&J** recipients yet

Boosters

Who should receive a booster dose:

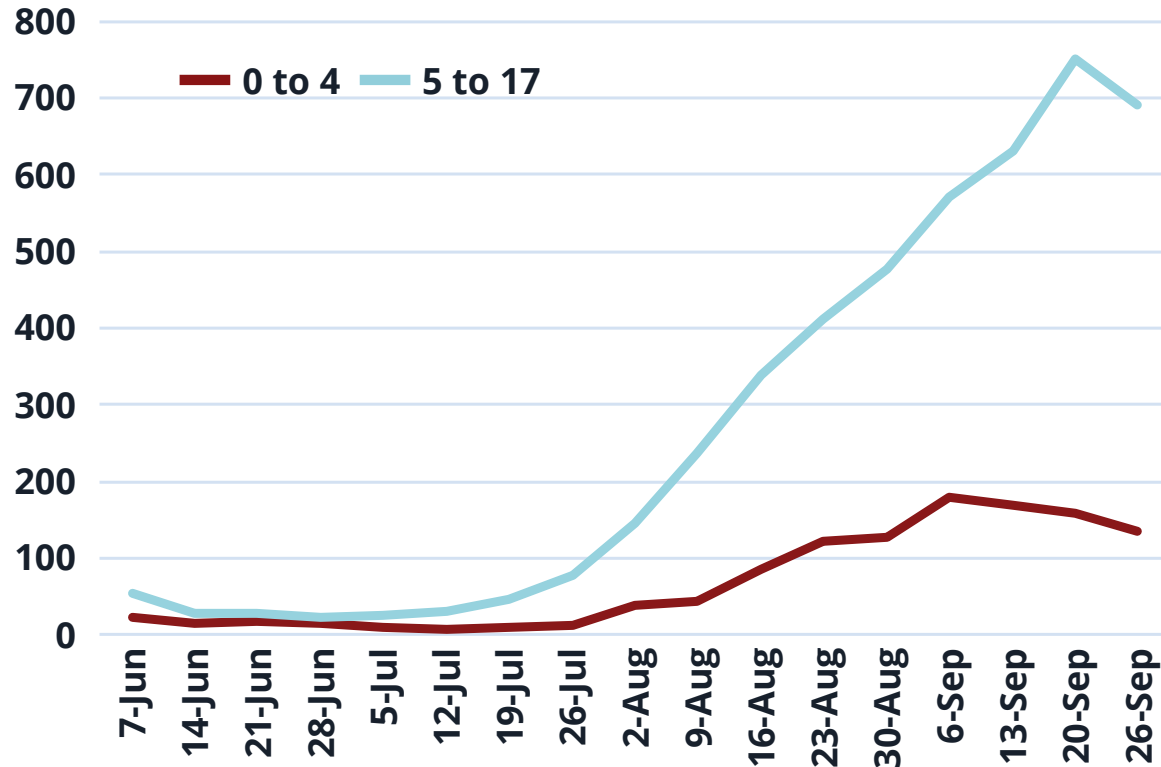
- people **65 years and older**
- residents in **long-term care settings**
- people aged 50–64 years with **underlying medical conditions**

Who may receive a booster dose of the vaccine:

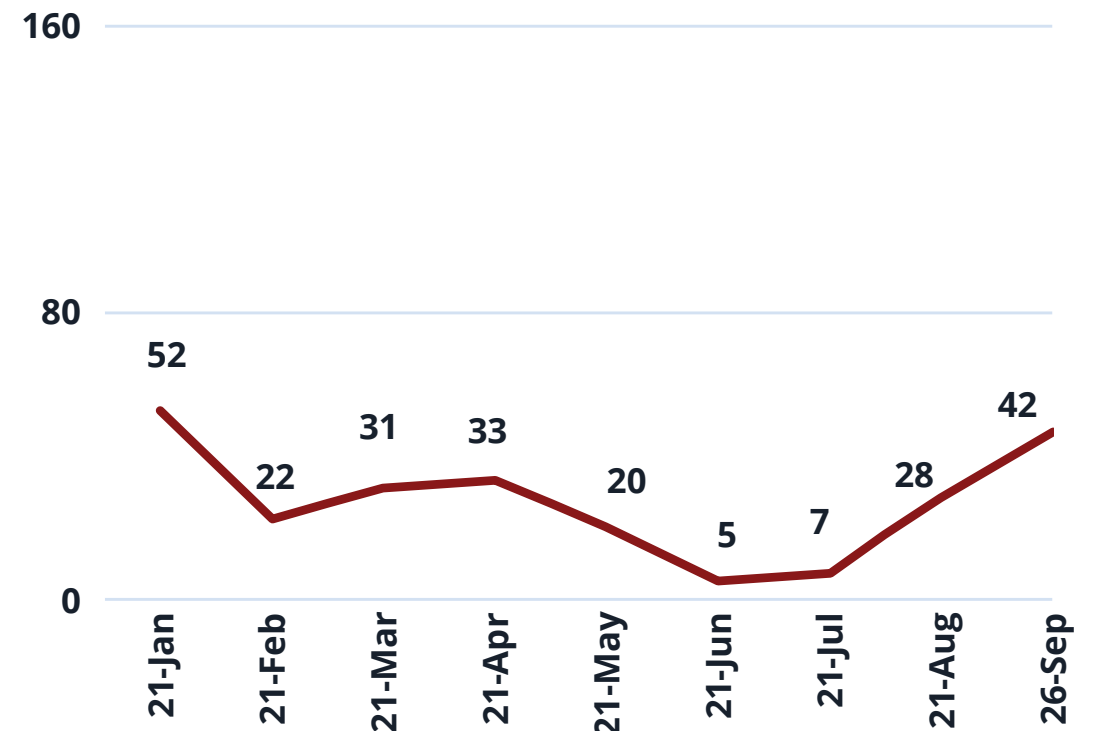
- people aged 18–49 years with **underlying medical conditions** based on their individual benefits and risks, and;
- people aged 18-64 years who are at **increased risk for COVID-19 exposure and transmission** because of occupational duties

COVID-19 Cases in Delaware Children

**New cases by week
June through September**
Number of Cases



**Pediatric hospitalizations with
confirmed positive COVID-19**
New Pediatric Confirmed COVID+ Admissions



**Secretary
Susan
Bunting**

Delaware
Department of
Education

Vaccination Requirement for K-12 Staff

- **All schools (public and private)** must maintain documentation that all staff are either vaccinated or are submitting to regular testing (once a week).
- Schools are **encouraged to offer on-site testing through the Quidel partnership.**

Process

- Schools and districts may have different procedures, but **must include**:
 - A secure mechanism for **handling vaccination information**.
 - A mechanism to **ensure regular testing is available** on-site if possible.
 - *Quidel partnership or community testing sites are options.*
 - *May use molecular or antigen (rapid) tests.*
 - A **discipline policy for staff unwilling** to either be vaccinated or get tested.

Resources

- **Guidance:** DPH Liaisons
- **Testing:** Quidel Partnership, DPH community testing locations
- **Policy:** LEAs and schools may use the Delaware [Department of Human Resources' state employee policies and procedures](#) to guide their own processes

School Update

- **All public schools are fully in person** – *a few also have a virtual option*
- Catching up: **Accelerated Learning and supports for students**



Get your
COVID-19 VACCINE

de.gov/getmyvaccine