

The background of the slide features a large, faint, circular seal of the State of Delaware. The seal contains the text "SEAL OF THE STATE OF DELAWARE" around the top and "LIBERTY AND INDEPENDENCE" around the bottom. In the center of the seal is a figure holding a scale and a sword.

DELAWARE'S RESPONSE TO COVID-19

Press Briefing
December 21, 2021

de.gov/covidvaccine

STATE OF DELAWARE

DATA UPDATE

748.1

New Cases

7-day Average

10.8%

Positive Tests

7-day Average

390 with **49** critical

Hospitalizations

2,249

Lives Lost

View more COVID-19 data: de.gov/healthycommunity

STATE OF DELAWARE

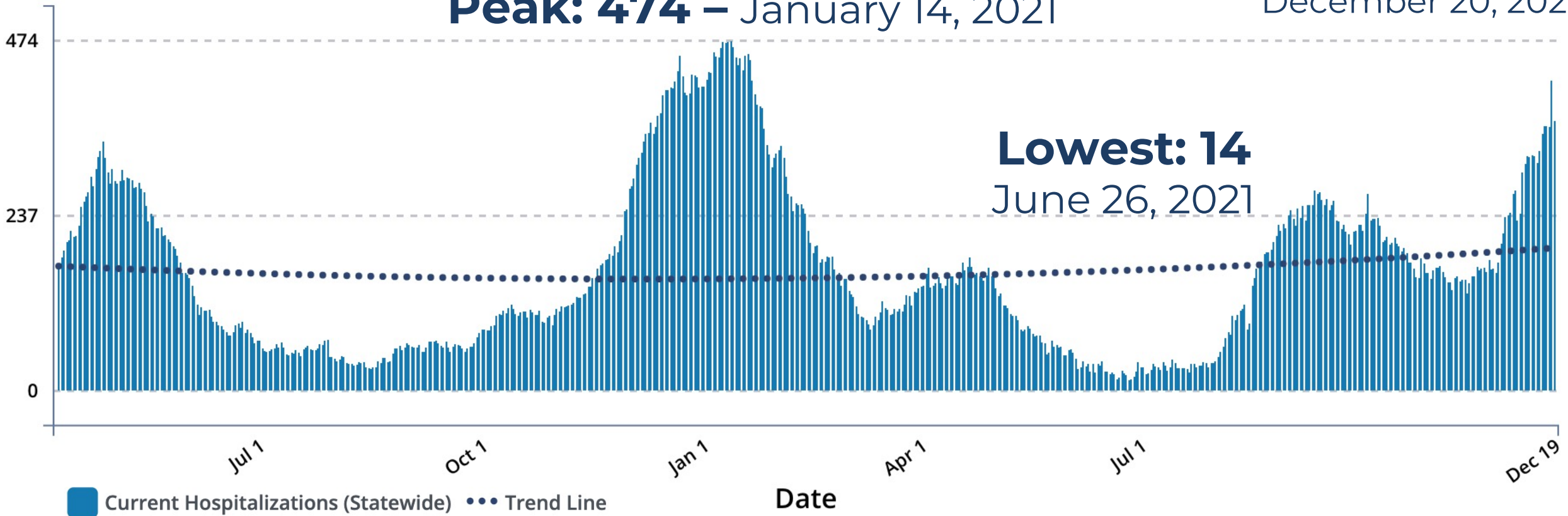
HOSPITALIZATIONS

Latest: 390

December 20, 2021

Peak: 474 – January 14, 2021

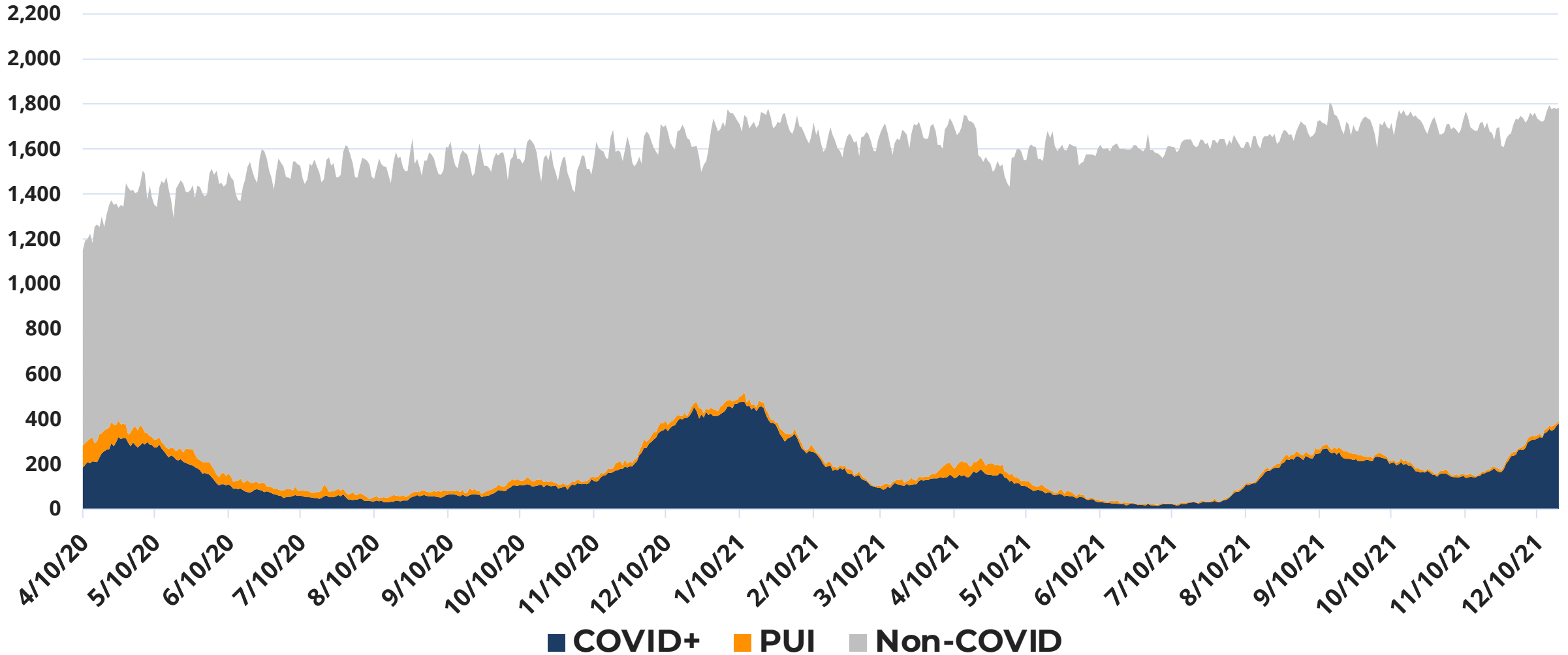
Lowest: 14
June 26, 2021



View more COVID-19 data: de.gov/healthycommunity

Delaware Hospitalizations: COVID+, Patients Under Investigation (PUI), and Non-COVID

4/10/2021 - 12/19/2021



Week of 12/06/2021– 12/12/2021

71%

**of COVID-19 hospitalizations
were unvaccinated or partially
vaccinated individuals**

STATE OF DELAWARE

VACCINE UPDATE

**Total Vaccines
Administered**

1,543,502

**Fully
Vaccinated**

618,343 (63.5%)

67.3%

Delawareans 5+
fully vaccinated

72.6%

Delawareans 12+
fully vaccinated

74.2%

Delawareans 18+
fully vaccinated

92.5%

Delawareans 65+
fully vaccinated

Data as of: December 20, 2021 - 6:00am

CDC Data: covid.cdc.gov/covid-data-tracker/#vaccinations

Fully Vaccinated - *Rates by Age Group*

Age	Statewide	New Castle County	Kent County	Sussex County
5-11	12.2%	15.4%	6.7%	8.3%
12-17	52.8%	60%	44.1%	40.8%
18-34	40.1%	54.6%	40.4%	45.4%
35-49	62.4%	65.9%	56%	57.8%
50-64	73.1%	74.5%	70.5%	71.9%
65+	91.9%	90.6%	88.1%	95.7%

View more COVID-19 data: de.gov/healthycommunity

STATE OF DELAWARE

BOOSTERS

Population	Percentage of fully vaccinated population	Number of People
Total Population	31.2%	192,915
65+	56.8%	99,233
50+	45.6%	152,610
18+	33.7%	192,545

CDC Data: [covid.cdc.gov/covid-data-tracker/#vaccinations](https://www.covid.cdc.gov/covid-data-tracker/#vaccinations)

DPH COVID-19 Vaccination Sites

Williams Public Health Clinic

805 River Rd
Dover, DE 19901

Hours: M-F 8:30 a.m. to 11:30 a.m.
AND 1:15 p.m. to 4:00 p.m.

Riverwalk Public Health Clinic

253 NE Front Street
Milford, DE 19963

Hours: M-F 8:30 a.m. to 11:30 a.m.
AND 1:15 p.m. to 4:00 p.m.

Adams Public Health Clinic

546 S Bedford Street
Georgetown, DE 19947

Hours: M-F 8:30 a.m. to 11:30 a.m.
AND 1:15 p.m. to 4:00 p.m.

Shipley Public Health Clinic

350 Virginia Avenue
Seaford, DE 19973

Hours: M-F 8:30 a.m. to 11:30 a.m.
AND 1:15 p.m. to 4:00 p.m.

Porter Public Health Clinic

509 W. 8th St.
PH Clinic-2nd Floor
Wilmington, DE 19801

Hours: M-F 8:30 a.m. to 11:30 a.m.
AND 1:15 p.m. to 4:00 p.m.

Hudson Public Health Clinic

501 Ogletown Road
Newark, DE 19711

Hours: M-F 8:30 a.m. to 11:30 a.m.
AND 1:15 p.m. to 4:00 p.m.

Oxford/University Plaza Public Health Clinic

256 Chapman Road, Ste 100
Newark, DE 19702

Hours: M-F 8:30 a.m. to 11:30 a.m.
AND 1:15 p.m. to 4:00 p.m.

Edward W. Pyle State Service Center

34314 Pyle Center Road
Frankford, DE 19945

Hours: Mon, Tues, Thurs, Fri
1:00 p.m. to 3:00 p.m.

Blue Hen Corporate Center

655 S. Bay Road, Suite 1A
Dover, DE 19901

Hours: M-F 8:30 a.m. to 11:30 a.m.
AND 1:15 p.m. to 4:00 p.m.

Georgetown Plaza Shopping Center

19 Georgetown Plaza
Georgetown, DE 19947

Hours: MWF 8:30 a.m. to 11:30 a.m.
AND 1:15 p.m. to 4:00 p.m.
Tues/Thurs 11:30 a.m. to 6:30 p.m.

Canby Park (Elizabeth Shopping Mall)

1946 Maryland Ave.
Wilmington, DE 19805

Hours: MWF 8:30 a.m. to 11:30 a.m.
AND 1:15 p.m. to 4:00 p.m.
Tues/Thurs 11:30 a.m. to 6:30 p.m.

**Appointments
recommended**

Check hours:
de.gov/getmyvaccine

Questions? Call: 1-833-643-1715 option 3

KNOW YOUR COVID-19 STATUS



At-Home Tests:

- **Vault Health** (free)
 - Request a kit: de.gov/hometest
- **Pixel - LabCorp** (free)
 - Learn more at de.gov/gettested

Fighting the Surge

- All DE hospitals have postponed elective surgeries
- Get vaccinated or get your booster
- Wear masks indoors in public

Fighting the Surge

Hospital and long-term care support:

- Training National Guard to work as CNAs to support long term care
- At least 50 members will be onboarded by mid-January

Contact tracing in schools:

- CDC resources to support contact tracing in schools
- Shifting community contact tracers to support school nurses

THANK YOU, SCHOOL NURSES!

Listen to your school nurse.

*They are working hard to keep their
school communities safe!*



Get your
COVID-19 VACCINE

de.gov/getmyvaccine

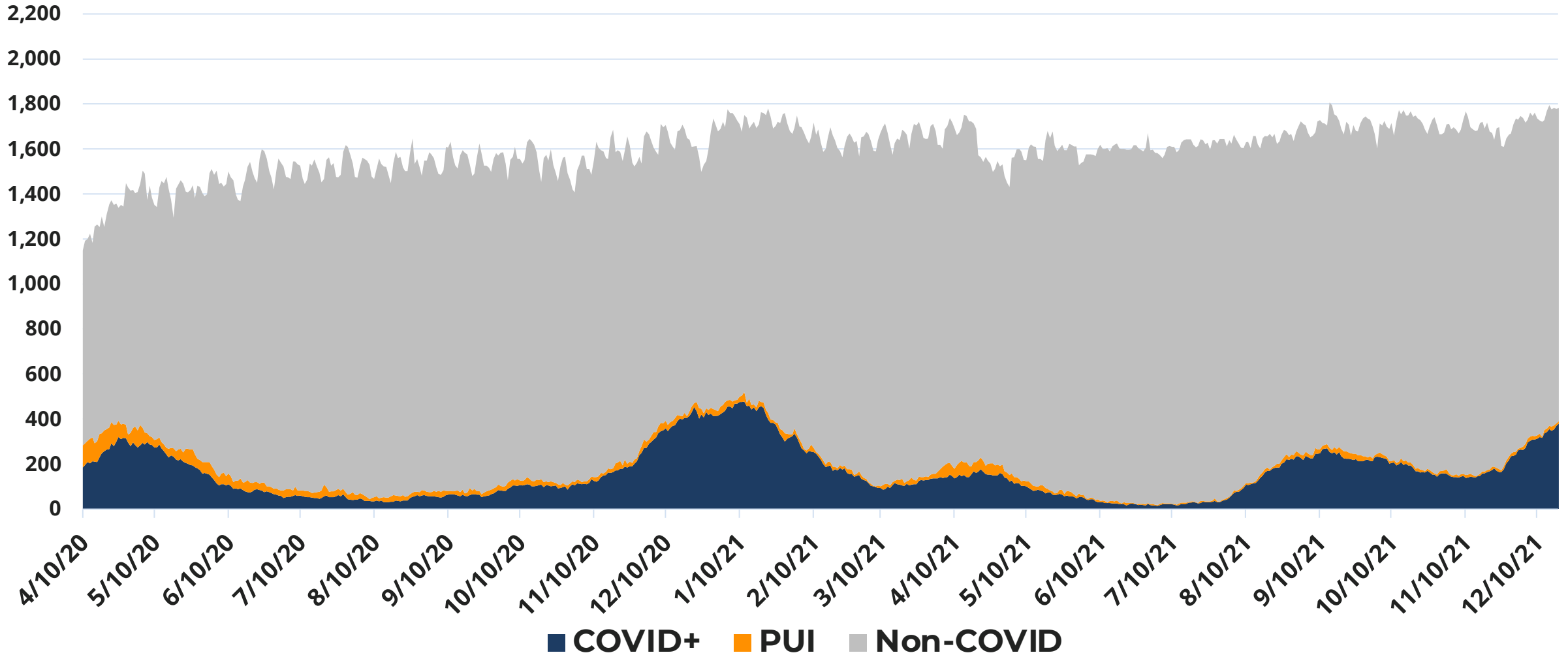
**Sharon
Kurfuerst**

**System Chief
Operating Officer;
President,
ChristianaCare Union
Hospital**

ChristianaCare

Delaware Hospitalizations: COVID+, Patients Under Investigation (PUI), and Non-COVID

4/10/2021 - 12/19/2021



We need your help.

In these trying times, we are working our hardest.

COVID-19 cases are rising, hospital beds are filling up and

WE NEED YOUR HELP.

Our doctors, nurses and people working in health care are doing everything we can to take care of you when you're sick. Yet every day we're seeing avoidable illness and death as a direct result of COVID-19.

The situation is critical.

Our emergency departments are crowded, and patients fill every hospital room – with some waiting in hallways for an opening. The pandemic has strained our operations and stressed our people. Care in our hospitals is safe but our ability to provide it is threatened.

At any time, you or a loved one might need our support. Heart attacks. Car accidents. Cancer. Stroke. Appendicitis. Flu Season is here and it is certain to increase the number of hospital patients. Now, an ominous question looms: will you be able to get care from your local community hospital without delay? Today, that's uncertain.

How does this happen in 2021 -- almost two full years since this deadly pandemic began? How can we as a society stand by and watch people die when a simple shot could prevent a life-threatening illness? Your access to health care is being seriously threatened by COVID-19. We need to stop the spread!

Today, we ask you to:

- Get vaccinated and get your booster
- Wear a mask (even if you are vaccinated) and socially distance
- If you feel sick, get tested for COVID-19
- Get your flu vaccination
- Encourage your neighbors and loved ones to take these steps



Terry M. Murphy, FACHE,
President and CEO
Bayhealth

David A. Tam, MD, MBA, CPHE,
FACHE, President & CEO
Beebe Healthcare

Janice E. Nevin, M.D., MPH,
President & CEO
ChristianaCare

Mark Mumford,
Executive Vice President,
Chief Executive, Delaware Valley
Nemours Children's Health

James L. Woodward,
President and CEO,
Trinity Health Mid-Atlantic, and
acting president of
Saint Francis Hospital

Penny Short, MSM, BSN, RN
President
TidalHealth Nanticoke

Vince Kane,
Director
Wilmington VA Medical Center





ChristianaCare™

**Health care workers have
been fighting COVID-19
since day 1.**



ChristianaCare™

What we are asking of you:

- **Get vaccinated and get your booster**
- **Wear a mask (even if you are vaccinated) and socially distance**
- **If you feel sick, get tested for COVID-19**
- **Get your flu vaccination**
- **Encourage your neighbors and loved ones to take these steps**



BOOST YOUR PROTECTION!

Adults 18+ are eligible • de.gov/boosters



**DR.
DAVID
TAM**

President & CEO

Beebe Healthcare



Beebe is here and able to care for you in our hospital and in our outpatient care centers.

- Found innovative way to make sure Sussex Countians received care
- COVID Vaccine and Testing centers (Lewes and Millsboro) to ensure a more streamlined appointment for COVID vaccine and testing



We are extremely busy in our emergency rooms and our hospital, as the number of COVID patients continue to rise.

- Doubled COVID-19 inpatients since Thanksgiving
- A majority are unvaccinated
- Other illnesses and urgent cases have not stopped during the pandemic



Increase in COVID cases has led to a delay in certain non-urgent, elective surgeries.

- **The situation is critical**
- Critically ill patients of many age groups
- Healthcare workers are exhausted after nearly two years of this once in a lifetime global pandemic, but are still caring for patients



**We need your help to
decrease this upward trend.**

Please get vaccinated.

Already vaccinated? **Get your booster.**



Get your
COVID-19 VACCINE

de.gov/getmyvaccine