

The background of the slide features a large, faint, circular seal of the State of Delaware. The seal contains the text "SEAL OF THE STATE OF DELAWARE" around the perimeter and "1787" at the bottom. In the center of the seal is a figure holding a scale and a sword, with a banner below it.

# WINTER VIRUS BRIEFING

---

November 14, 2022

[de.gov/holidays](https://de.gov/holidays)

**WINTER 2022 - 2023**

---

**Health care officials are concerned  
about the combined threat of:**

**Influenza | RSV | COVID-19**

STATE OF DELAWARE

# COVID-19 DATA UPDATE

---

**131.4**

**New Cases**

*7-day Average*

**7%**

**Positive Tests**

*7-day Average*

**86** with **10** critical

**Hospitalizations**

**127** in 2020, **148** in 2021

**3,148**

**Lives Lost**

*Data as of: November 10, 2022 at 1:56 p.m.*

View more COVID-19 data: [de.gov/healthycommunity](https://de.gov/healthycommunity)

STATE OF DELAWARE

# COVID-19 VACCINE UPDATE

**Total Vaccines  
Administered**

**2,022,351**

**Completed  
Primary Series**

**700,832 (72%)**

**76.1%**

**Delawareans 5+**  
who have completed  
their primary series

**80.2%**

**Delawareans 12+**  
who have completed  
their primary series

**81.7%**

**Delawareans 18+**  
who have completed  
their primary series

**95%**

**Delawareans 65+**  
who have completed  
their primary series

*Data as of: November 10, 2022 – 8:00 p.m.*

**CDC Data:** [covid.cdc.gov/covid-data-tracker/#vaccinations](https://www.covid.cdc.gov/covid-data-tracker/#vaccinations)

STATE OF DELAWARE

# COVID-19 VACCINE UPDATE

## *Updated Booster Bivalent*

**8.8%**

**Delawareans 5+**  
who have received a  
bivalent booster dose

**9.6%**

**Delawareans 12+**  
who have received a  
bivalent booster dose

**10.3%**

**Delawareans 18+**  
who have received a  
bivalent booster dose

**23.8%**

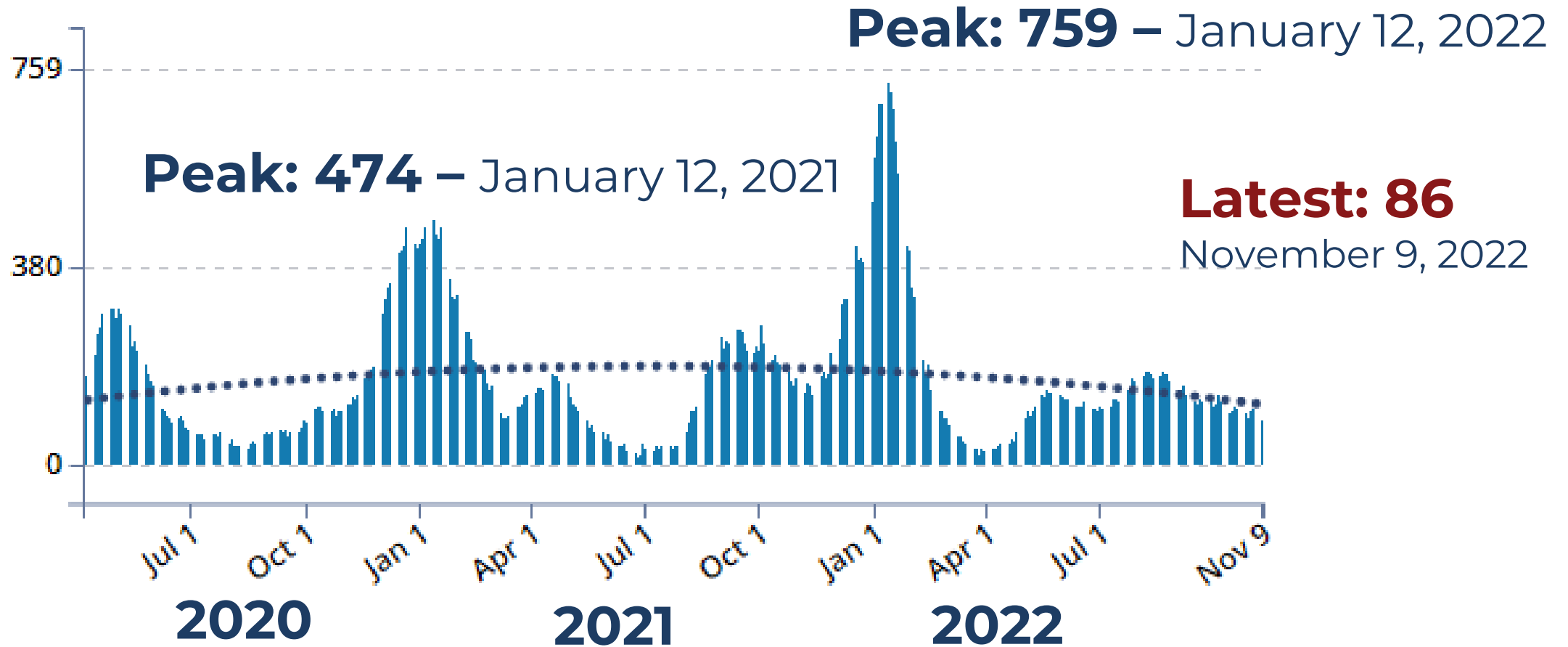
**Delawareans 65+**  
who have received a  
bivalent booster dose

*Data as of: November 10, 2022 – 8:00 p.m.*

**CDC Data:** [covid.cdc.gov/covid-data-tracker/#vaccinations](https://covid.cdc.gov/covid-data-tracker/#vaccinations)

STATE OF DELAWARE

# HOSPITALIZATIONS



View more COVID-19 data: [de.gov/healthycommunity](https://de.gov/healthycommunity)

STATE OF DELAWARE

# INFLUENZA DATA UPDATE

---

**772**

**cases this  
flu season**

**483**

**of those cases were  
recorded last week**

**20**

**hospitalizations  
this season**

*Data as of: November 5, 2022*

View more influenza data: [de.gov/healthycommunity](https://de.gov/healthycommunity)

STATE OF DELAWARE

# INFLUENZA VACCINE UPDATE

---

**Total Vaccines  
Administered**

**233,511**

---

**Percentage of  
Population**

**24.1%**

---

*Data as of: November 5, 2022*

View more influenza data: [de.gov/healthycommunity](https://de.gov/healthycommunity)

# Flu Vaccine- *Rates by Age Group*

Age	Total Count	% of demographic vaccinated	% of persons vaccinated
0-4	10,336	18.9%	4.4%
5-11	13,199	17%	5.7%
12-17	10,801	15.2%	4.6%
18-34	20,766	9.8%	8.9%
35-49	24,926	14.7%	10.7%
50-64	49,842	25%	21.3%
65+	103,641	56.9%	44.4%

View more influenza data: [de.gov/healthycommunity](https://de.gov/healthycommunity)

*Data as of: November 5, 2022*

STATE OF DELAWARE

# RSV DATA UPDATE

---

**505**  
cases this  
season

**104**  
of those cases were  
recorded last week

*Data as of: November 5, 2022*

View more influenza data: [de.gov/healthycommunity](https://de.gov/healthycommunity)

**WINTER 2022 - 2023**

---

**Keep doing the things we know  
that work.**

**WE HAVE SEEN SURGES  
THE PAST TWO WINTERS.**

# WINTER 2022 - 2023

---

**Stay home** if you're sick.

**Get vaccinated and boosted** when you're eligible.

**Get your flu shot** if you haven't yet.

**Secretary  
Molly  
Magarik**

*Delaware  
Department of  
Health and Social  
Services (DHSS)*

# COVID-19 BIVALENT BOOSTERS

---

**What:** Targets original and BA.4 & BA.5 Omicron variants

**When:** Two months after completing primary series or any prior booster (3 months if you've recently had COVID-19)



# COVID-19 BIVALENT BOOSTERS

---

**Who:** Persons 5 and older are eligible

**Why:** You need updated vaccine protection against changing variants

YOUR  
COVID-19  
PROTECTION  
IS DUE FOR  
AN UPDATE.

COVID-19  
BIVALENT  
BOOSTER

Get your COVID-19 bivalent booster. 

# COVID-19 BIVALENT BOOSTERS

---

Find a vaccine site near you:

[vaccines.gov](https://vaccines.gov)

# 2022 – 2023 Flu Season

---

- **Early start:** 772 cases through November 5.
- Cases **more than doubled in week 4** of the season (from 218 to 483)
- Season officially began October 2; flu started circulating in September
- **14 flu-related hospitalizations, no deaths, pediatric case reported**



[de.gov/healthycommunity](https://de.gov/healthycommunity)

# Flu Vaccine

---

- **All Delawareans 6 months and older are eligible**
- Can get vaccine during same visit as COVID-19 vaccines (including bivalent) – Same arm or different arm
- Even if you get the flu after getting the vaccine, symptoms should be milder
- Vaccines available through medical providers, pharmacies, FQHCs, DPH clinics and some DPH community events

# More fall. Less flu.



**Get the flu  
vaccine today.**



# Respiratory Syncytial Virus (RSV)

---

- **Delaware:** 505 cases through expanded surveillance.
- **Other states:** cases leveling off.
- **People impacted:** RSV can occur in any age, but most common in children under age 2. Can be severe, especially for infants and older adults.

# Respiratory Syncytial Virus (RSV)

---

- **Symptoms:**
  - Starts with fever, cough, congestion, runny nose, sneezing, and, in infants, fussiness and poor feeding.
  - More severe symptoms: fast or short breathing or wheezing, and in infants and young children, grunting noises when breathing, chest caving in during breathing, and skin turning purple or blue due to lack of oxygen.
  - Talk with your pediatrician/doctor if you aren't sure what to do next.

# Prevention

---

- Get vaccinated
- Stay home if sick
- Cover coughs and sneezes with a tissue, and dispose of the tissue afterward
- Wash hands frequently with soap and water or use alcohol-based hand sanitizers
- Avoid touching your eyes, nose or mouth
- Sanitize commonly touched surfaces more frequently
- Increase ventilation
- Wear a mask when cases are high or if you are at higher risk for respiratory illness

# JOIN US TOMORROW ON [facebook.com/DelawareDHSS](https://facebook.com/DelawareDHSS)

---



# LEAD TESTING IN DELAWARE SCHOOLS

---

- [Join us](#): Public forum tonight hosted by members of the General Assembly
- Information sent out to families from DHSS and the Delaware Department of Education
- Questions? E-mail [DDOE@doe.k12.de.us](mailto:DDOE@doe.k12.de.us)

**Dr.  
Priscilla  
Mpasi**

**Associate Clinical  
Director**

**Complex Primary Care  
and Community  
Medicine**

*ChristianaCare*

# **It's cold and flu season.**

**Parents and caregivers, anticipate a viral illness in your household.**

Here's what you should look out for:

## Winter viruses may look similar.

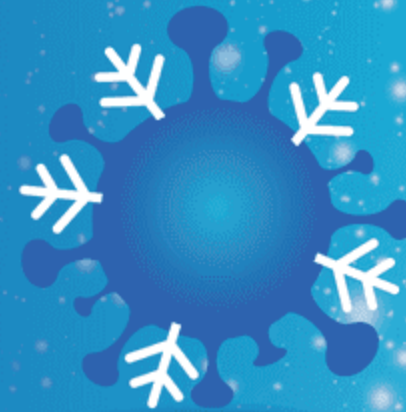
- Get COVID-19 test
- Check for fever
- Watch for changes in symptoms and behavior
- Call pediatrician or urgent care
- Get your flu shot

**It's not too late to  
get your flu shot.**

**Eligible Delawareans over 6 months old can  
get a flu shot throughout flu season  
if you have not already.**

# Holiday Season

**Don't let COVID-19  
freeze your  
holiday season.**



Stay home if you're sick. • Get vaccinated and boosted.  
Get tested before and after gatherings. • Wear a mask when cases are high.



**We're seeing a rise in visits at hospitals.  
Continue to do the things we know that work.**

# THANK YOU, HEALTH CARE WORKERS!

**Say thank you by doing the  
things we know that work.**

*Stay home if you're sick.*

*Get vaccinated and boosted if you are eligible.*

The background of the slide features a large, faint, circular seal of the State of Delaware. The seal contains the text "SEAL OF THE STATE OF DELAWARE" around the perimeter and "1787" at the bottom. In the center of the seal is a figure holding a scale and a sword, with a banner below it.

# WINTER VIRUS BRIEFING

---

November 14, 2022

[de.gov/holidays](https://de.gov/holidays)